

# DAWSON





# ABOUT

**D**on't knock Dawson Metal's open-door policy. Dawson Metal (which does business as Dawson Doors) manufactures custom-made stainless steel, aluminum, and bronze doors for businesses and storefronts. The company also manufactures balanced doors, which open in an elliptical arch. It mainly serves US corporations and the construction industry, and makes doors for private residences, as well. A family-owned and operating business since 1946, Dawson remains the leading manufacturer of quality metal fabrications and architectural products, serving a clientele in the United States and throughout the world. From simple to ornate, every project is designed and fabricated through a unique approach focused on providing the highest quality for the most difficult and demanding fabrications and finishes. Our global clientele come back to Dawson because of our success in meeting or exceeding their expectations.

FERRE  
GUCCI®  
VIA RODEO  
U.S. CAPITOL  
TIFFANY & CO  
FORD MOTORS  
CAPITAL GRILLE  
NEW YORK TIMES  
ONE VANDERBILT  
SENATE BUILDING  
CHRYSLER BUILDING  
HOTEL CARMICHAEL  
ST. GEORGE THEATER  
ROCKEFELLER PLAZA  
LIVE! CASINO & HOTEL  
PARIS HOTEL & CASINO  
MUSEUM OF THE BIBLE  
U.S. EMBASSY IN BEIJING  
SANTA BARBARA MUSEUM  
GA STATE OFFICE BUILDING  
(5) SMITHSONIAN MUSEUMS  
SHAW CENTER FOR THE ARTS  
HOME OF THE EMIR OF QATAR  
CHICAGO STARBUCKS RESERVE  
WASHINGTON HARBOUR HOTEL  
ROSEWOOD HOTELS IN ABU DHABI  
SHEA'S PERFORMING ARTS CENTER  
KING FAHD INTERNATIONAL AIRPORT  
STATE CAPITOL BUILDING, JUNEAU, AK

# PROMINENT PROJECTS





# INNOVATION

Behind Every Dawson Door is our long-standing reputation as a leading manufacturer of high-quality custom stainless steel or bronze doors and related architectural products.

## Custom Architectural Entrances

Dawson custom doors are manufactured from quality materials to the architect's specifications. The unique design uses a continuous stainless steel or bronze skin, blanked from one sheet of material. The result is a truly seamless door face with a flawless finish. The continuous channel frame is reinforced with an extraordinarily rigid, durable, but lightweight polycarbonate honeycomb. The metal skin of the door is permanently bonded to the honeycomb with a specially formulated high-strength adhesive which with can withstand temperatures to 425°F. The quality construction suppresses sound transmission and assures a smooth, seamless surface.

All Custom Series doors can be fitted with a variety of swing hardware, as well as the highest quality balanced door hardware. The superior function of our swing or blanced door design and the exceptional quality and beauty of Dawson Custom Doors satisfy the most demanding specifications.

Dawson's proprietary designer door sysstem offers the architect and contraactor an economical, high-quality alternative to custom installations. 16-gauge material combined with tie rod and welded construction yields a durable, functional entrance system. These stainless steel or bronze doors and frames are available in the same fine finishes as Dawson's Custom Series for an aesthetically superb appearance.



ALL DAWSON DOORS AND ENTRANCES  
ARE DESIGNED AND FABRICATED TO  
ENHANCE THEIR AESTHETIC APPEAL.



# FINISHING OPTIONS

## Stainless



#8 Mirror Polished  
Stainless Steel



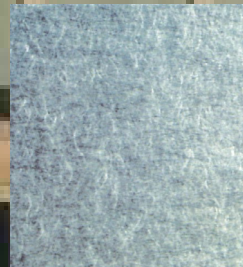
#4 Satin  
Stainless Steel



#6 Satin  
Stainless Steel

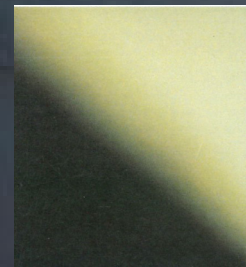


Glass Bead Finish  
Stainless Steel

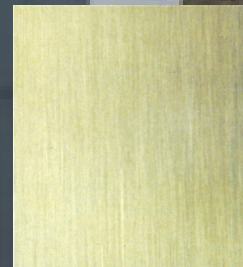


Non-Directional  
Finish Stainless

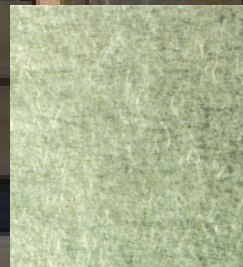
## Brass



#8 Mirror Polished  
Brass



#4 Satin  
Brass

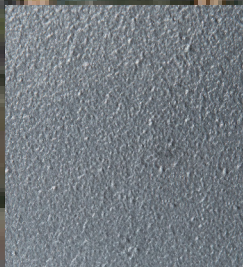


Non-Directional  
Brass Finish



Kynar  
Wet Paint

## Painted



Powder  
Coating

*The above photos are a representation of our finishes. Please consult the factory to obtain actual finish samples prior to final selection. Additional finishes available; please call sales department for special options.*

## Material Options

304 Stainless Steel

316 Stainless Steel

464 Alloy Naval Brass

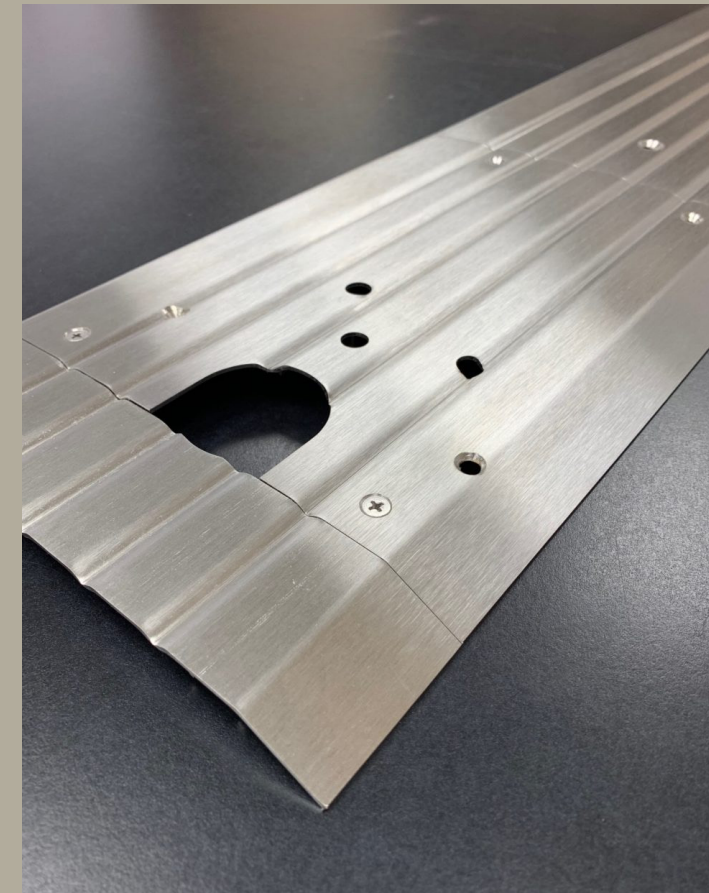
280 Alloy Muntz Metal

13 ga Galvannealed Steel

.125 (1/8") Aluminum

Corten Steel

# CUSTOM THRESHOLDS



# WHY DAWSON?

- Solution-Oriented Team
- Professional Coordination
- Consistent High Quality
- On-Time Deliveries/Deadline Driven
- Current Code Compliance
- ISO Certified Factory
- Quick & Reliable Quotes
- Competitively Priced

Dawson Custom Thresholds can be fabricated from stainless steel or brass, and include all necessary support channels and anchors. Thresholds can be manufactured in any specified width, up to 120" long (one piece), and are ADA compliant at 1/4", 3/8" or 1/2" high. Thresholds are available with a factory-applied #4 satin finish (US32D/US4). Hardware preparation, return miters/returned closed ends, and door jamb notches are available on all threshold types. Custom machined plate thresholds are also available and can be supplied with a Slipnot finish upon request.

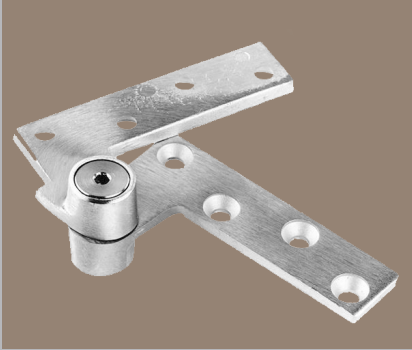


# HARDWARE CONFIGURATIONS



## Balanced

The door panel rotates around a rolling pivot in an elliptical path to provide the widest possible opening.



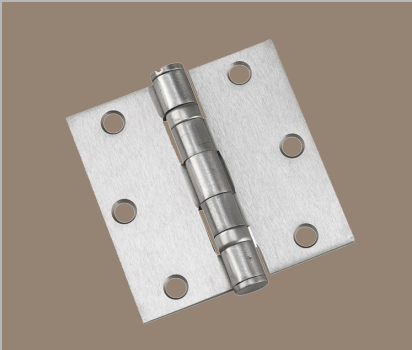
## Offset Pivoted

Used on single acting doors - the pivot point is offset from the center.



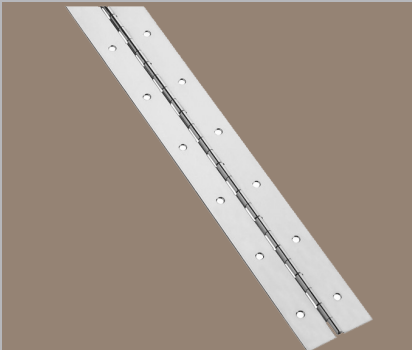
## Center Hung

Used on single or double acting doors - the pivot point is at the center.



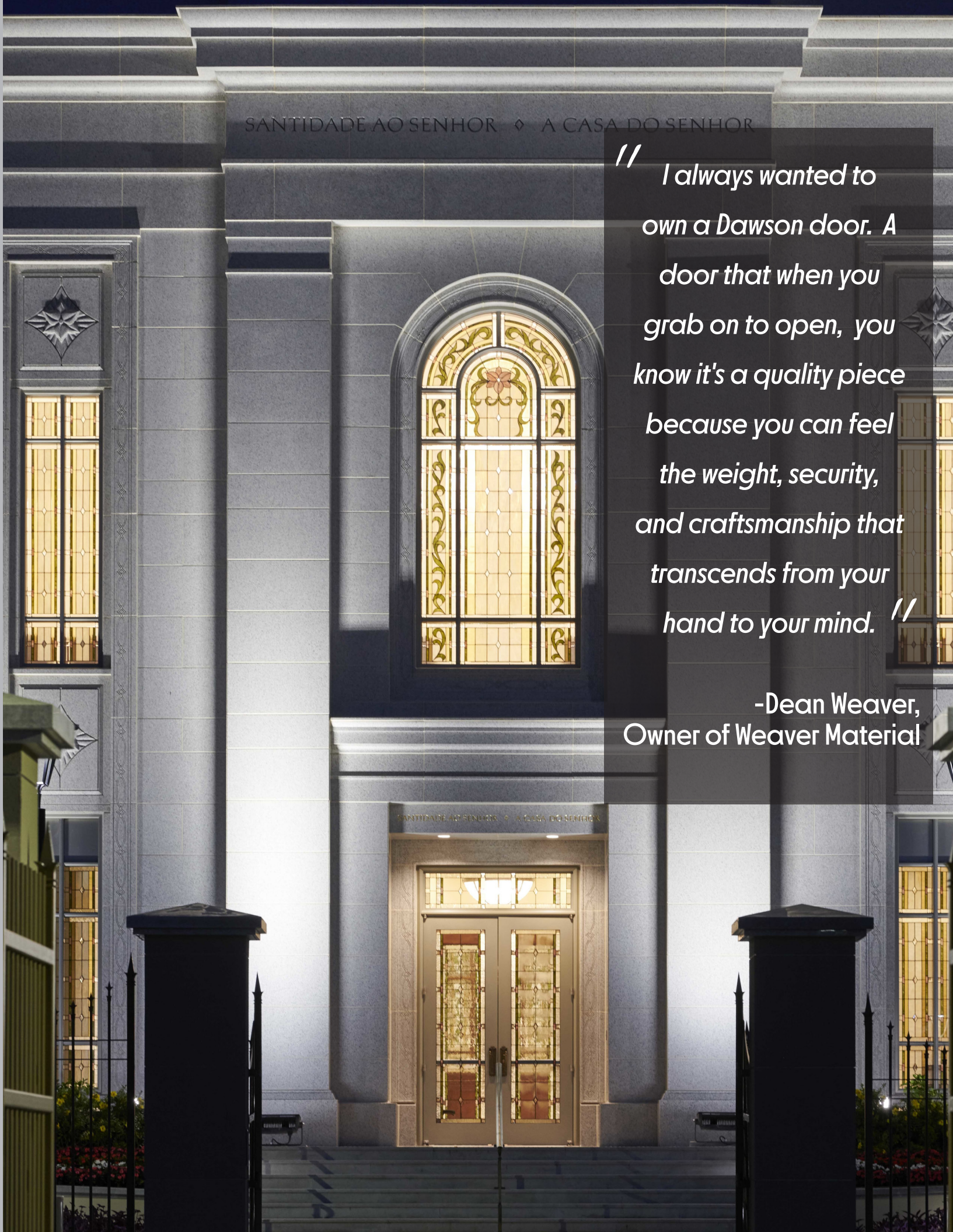
## Butt Hung

Comprised of two leaves that match, one is attached to a fixed component and the other to a moving component.



## Continuous Hinge

Made to match the full height of the door so the weight of the door is distributed along the full height of the frame.



// I always wanted to own a Dawson door. A door that when you grab on to open, you know it's a quality piece because you can feel the weight, security, and craftsmanship that transcends from your hand to your mind. //

-Dean Weaver, Owner of Weaver Material



# THE DAWSON BALANCED DOOR

Dawson’s balanced doors are understood to be the highest standard in the industry.

## Lower Maintenance Cost

Dawson manufactures stainless steel castings to match stainless steel doors, and bronze castings to match bronze doors. There is no dissimilar metal reaction.

Competitors use bronze cast arms on stainless doors, which will oxidize over time and require costly maintenance.

## Superior Materials

Dawson uses self-aligning needle bearings in all door pivots.

Competitors use plastic sleeve bearings.

## Stronger Hinges

Dawson uses a 1.9” diameter steel tube welded to the arms.

Competitors use a 1.75” diameter steel tube hinge shaft.

## Stronger Guide Box With Better Integration

Dawson makes a one-piece guide box machined from stainless steel, which is 50 percent stronger, more than twice as hard, and will not discolor due to corrosion. The Dawson guide box has a larger cross-sectional area for strength, and incorporates a trim plate to match the frame material.

Competitors use a guide box that is manufactured from one-piece cast bronze.

## Easier Installation & Adjustment

Dawson's product integrates all the controls (spring tension, swing speed and latch speed) in the header. This location not only offers protection from dirt and corrosion, but allows for ease of installation, as well as easy access for adjustments in the guide channel without having to remove the door from the opening.

Competitors' hardware is difficult to adjust because the gearbox is located below the threshold grade. This means the floor must be cut (or an appropriate space "boxed out") to accommodate the hardware. This location exposes the mechanism to dirt, water, salt, and other contaminants, which can cause corrosion and make adjustment difficult.

STANDARD SERIES



RETAIL SERIES

ALL GLASS SERIES



ULTRA NARROW SERIES



RUGGED SERIES



ALLUMINUM SERIES

## New and Improved

Dawson’s newly designed system utilizes the Record 8100 series auto operator. This operator fits nicely in a 6” high x 6” deep header and offers several enhanced features compared to the older, outdated system (still used by our leading competitor). Our engineers designed this system so that the closer is eliminated from the balanced hardware which creates a truly free swinging door with no resistance. Next, we designed a smaller robust header mechanism so that the operators drive arm could be connected directly to the door. There is a very small cutout on the interior side of the door for the required drive arm clearance, but this is totally concealed when the door is in the closed position. The Record 8100 series operator features include an internal clutch/brake system which maintains door position at the fully-open and/or fully-closed position. Additionally, a power assist mode is available which provides additional opening force thus greatly reducing the amount of force required to open the door in manual mode (as little as 2 pounds of opening force can be achieved).





 **doorautomation**  
CORP.  
SWING - SLIDE - REVOLVING  
AUTOMATIC AND MANUAL DOOR SYSTEMS  
2700 SHAMES DRIVE, WESTBURY, N.Y. 11590  
OFFICE (516) 678-4440  
WWW.DOORAUTOMATION.COM



DAWSON